

ARCHITEX

CAPABILITY STATEMENT

2024

CONTENTS

01 + INTRODUCING
ARCHITEX

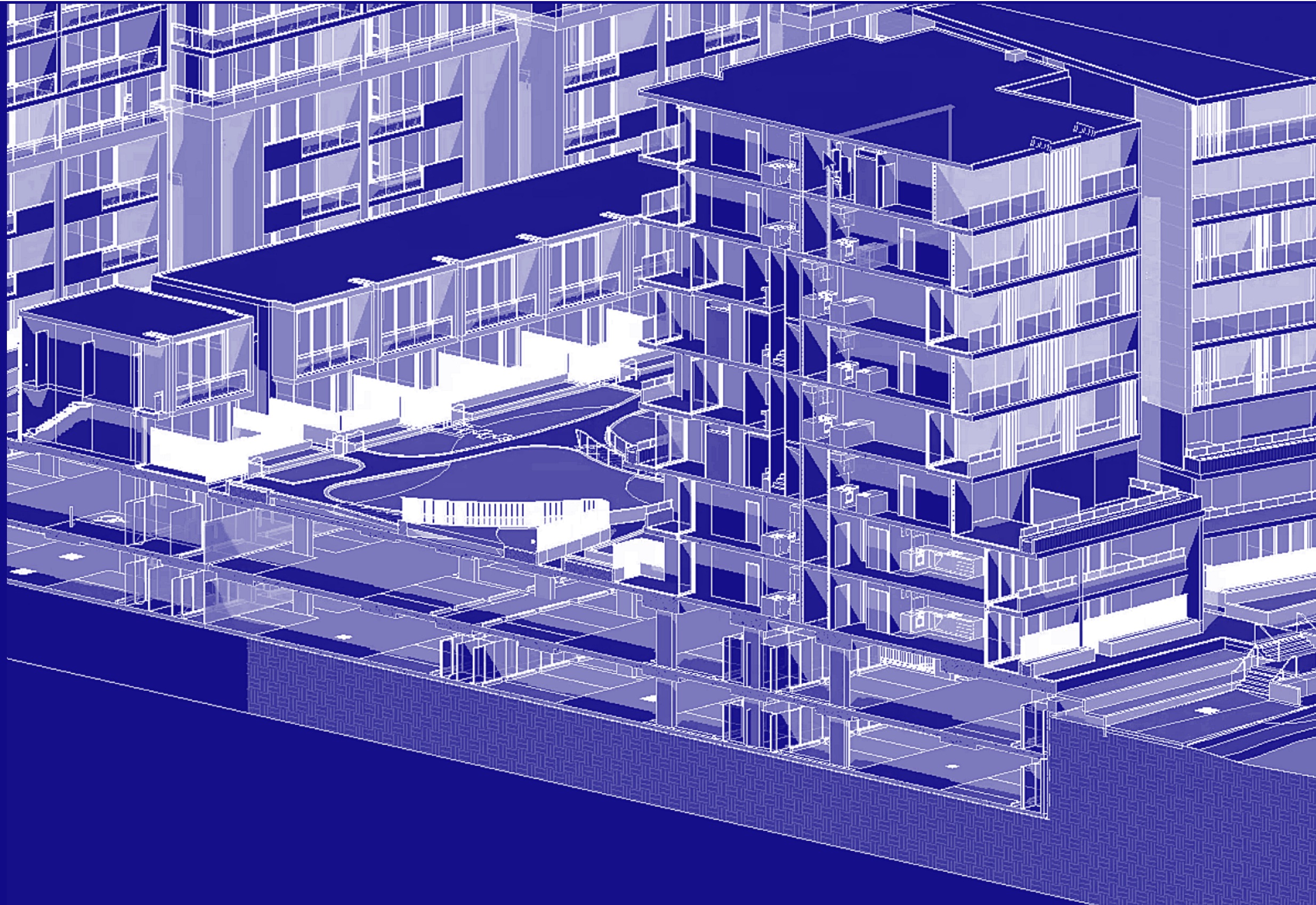
02 + MEET THE
TEAM

03 + PROJECT
SHOWCASE

04 + THE MIJASU
FAMILY

+ 01
INTRODUCING ARCHITEX

+ WE ARE ARCHITECTS, DRAFTERS AND
DOCUMENTERS WITH OVER 45 YEARS
OF EXPERIENCE IN LARGE SCALE
MULTI-RESIDENTIAL, RETAIL,
INDUSTRIAL AND COMMERCIAL



+ USING THE LATEST IN BIM TECHNOLOGY, OUR WORK IS RESPECTED FOR ITS PRECISION IN COORDINATING ALL CONSULTANTS AND DISCIPLINES TO DELIVER DOCUMENTATION FOCUSED ON CONSTRUCTIBILITY.

+ 02
MEET THE TEAM

+ OUR LEADERSHIP REPRESENTS
OVER 100+ YEARS OF BUILT
ENVIRONMENT EXCELLENCE



+ CLAYTON EDWARDS
DIRECTOR



ARBV Reg 5205
NSW Nominated Architect: Reg 11632

Clayton brings over 12 years of architectural and interior design experience across a breadth of work including a number of award winning residential, heritage and commercial fit out projects.

As Director of Cley Studio, Clayton is responsible for design direction, quality assurance processes and mechanisms within the studio at varying points of the iterative design process. He is extremely agile, embracing a collaborative approach to projects to ensure only the most informed and considered design solutions are ideated, conceptualised and developed.



+ ROBERT DEL PIZZO
ADVISOR



NSW Nominated Architects: Reg 3972
Fair Trading NSW Design Practitioner Registration: DEP0001254

Robert, a seasoned architect with over 47 years of experience, leads with a commitment to blending creative design and sensible constructability.

As the Principal Architect, and original founder of Architex, he values collaboration, respecting client opportunities, and maintaining industry-high standards for optimal project outcomes. Robert fosters an environment that enables his team to deliver exceptional work.



+ PETER DEL PIZZO
STUDIO DIRECTOR



Peter brings over 25 years of residential, commercial and industrial design experience with expertise across planning proposals, BIM collaborations, heritage work and project management.

As Studio Director, Peter embraces complex challenges that encourage collaborative and innovative thinking. He believes in working closely with clients and other stakeholders to deliver the best potential solutions for every project and space.



+ JAMES CORRAL
PROJECT ARCHITECT



James brings over 12 years of experience in architectural design across a range of sectors including multi residential, industrial, commercial, retail and early education centres.

He is a forward-thinking problem solver, unafraid to explore new opportunities in design and technology, as well as the importance of sustainability within the industry. James’ expertise in BIM technology and thermal performances ensures every project is completed thoroughly and efficiently.



+ DENNIS WIMMER
SENIOR ARCHITECT / MANAGER

Dennis is a dedicated, thoughtful and detail-oriented architect with over 38 years’ experience spanning project types like adds and alts, bespoke houses, duplexes, medium and high-density housing, child-care facilities, as well as some commercial and industrial developments.

Dennis champions collaboration, celebrating the strengths of each individual team member and how that best serves the work.



+ DENNIS BUSLIJETA
SENIOR DRAFTSMAN



Dennis is a highly experienced, detail-oriented Draftsman with over 27 years’ experience at Architex. In addition to maintaining an efficient work environment, Dennis leads the charge in developing new requirements and procedures for projects, as well as new and better ways to showcase documentation.

His proficiency in Revit and Autocad, and hands-on approach to working with external stakeholders, ensures projects are completed quickly and thoroughly.



+ DEREK BROOKE
SENIOR DRAFTSMAN

Derek is a considered and methodical Draftsman with a focus on operational efficiency. Working collaboratively with stakeholders, he marries a wealth of industry expertise with the unique opportunities of each new project.

From start to finish, Derek brings exceptional attention to detail to his designs and documentation, ensuring projects are completed thoughtfully and approved quickly.



+ JAMES DACEY
SENIOR DRAFTSMAN

James is a forward-thinking Draftsman with a comprehensive background in architectural documentation and software advancements.

With a focus on managing and documenting high-rise developments, plus his proficiency in emerging industry technologies, James brings continuous improvement for sustained motivation to every project.

+ 03
PROJECT SHOWCASE

+ HUNTER + O'CONNEL STREET, PARRAMATTA

MIXED USE DEVELOPMENT



CLIENT + TOP PLACE

+ 20 STOREY RESIDENTIAL TOWER

+ 108 UNITS

+ RETAIL + COMMERICAL (GROUND FLOOR)

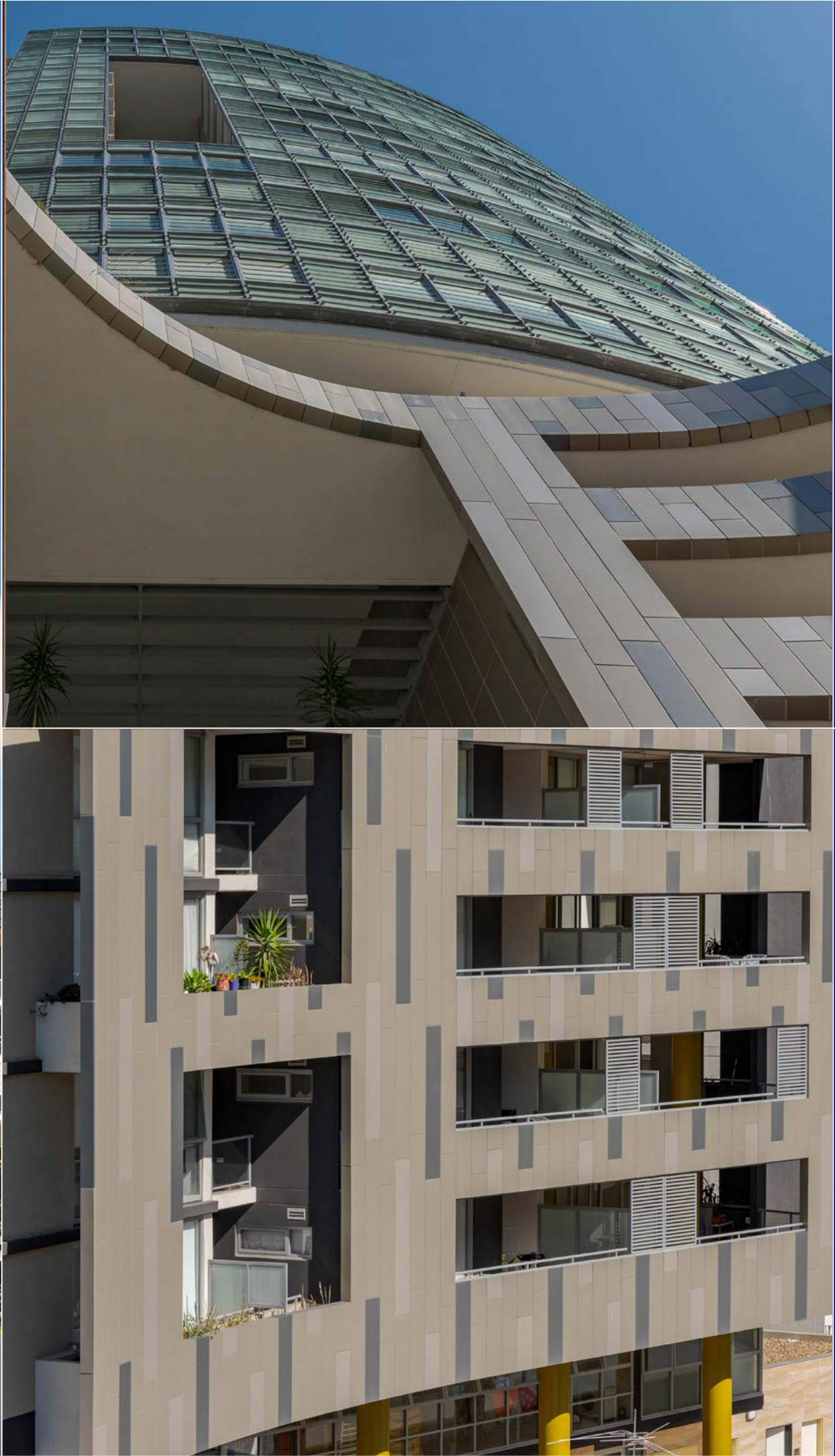
+ WIGRAM + HASSALL STREET, PARRAMATTA

MIXED USE DEVELOPMENT



CLIENT + MAROUN CONSTRUCTIONS

- + 17 STOREYS
- + 156 RESIDENTIAL APARTMENTS
- + 5 COMMERCIAL / HERITAGE UNITS
- + 4 LEVELS OF BASEMENT CAR PARKING

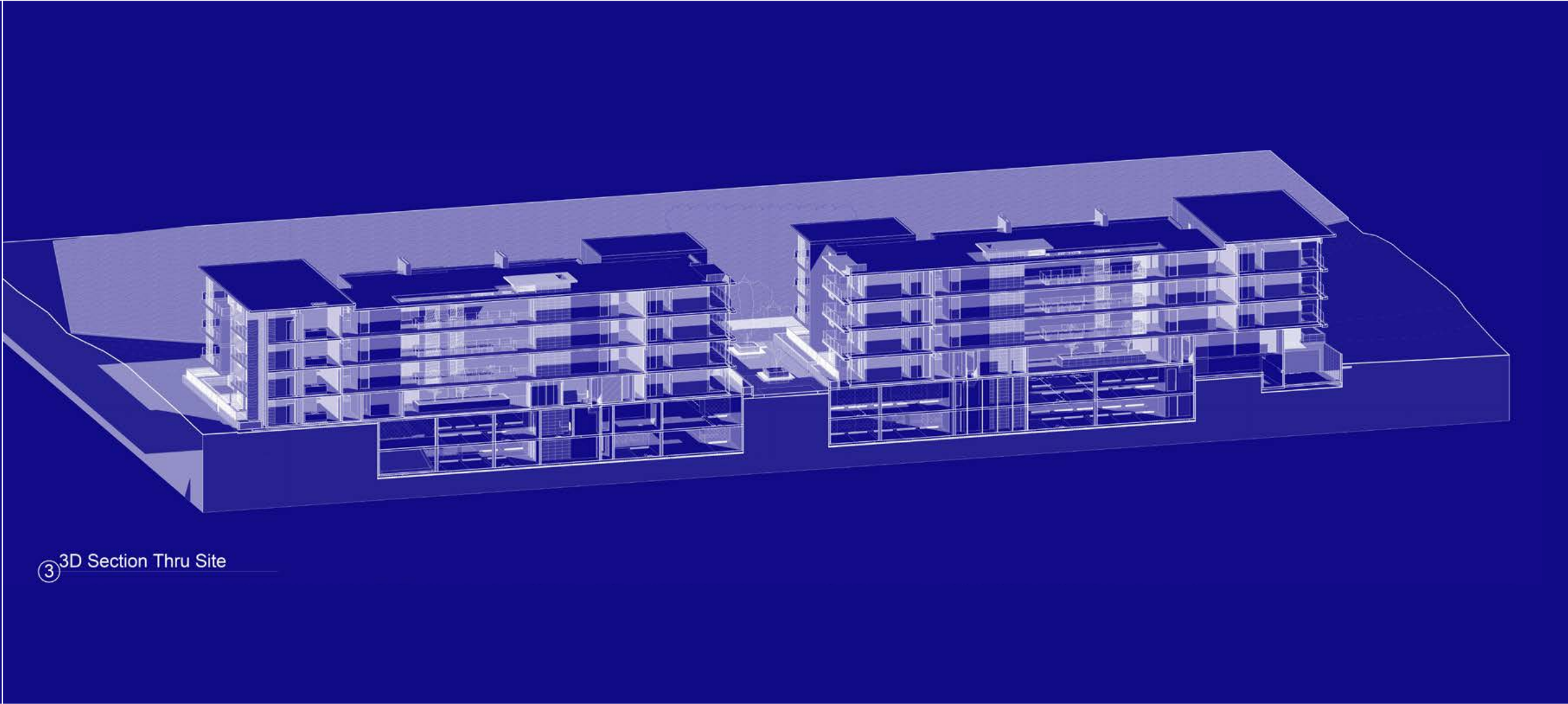


+ LAKESIDE PARADE, JORDAN SPRINGS
RESIDENTIAL



CLIENT + COPLEX

- + 5 STOREYS
- + 80 RESIDENTIAL APARTMENTS
- + 2 LEVELS BASEMENT CAR PARKING



③ 3D Section Thru Site



+ FACTORY STREET, GRANVILLE
COMMERICAL



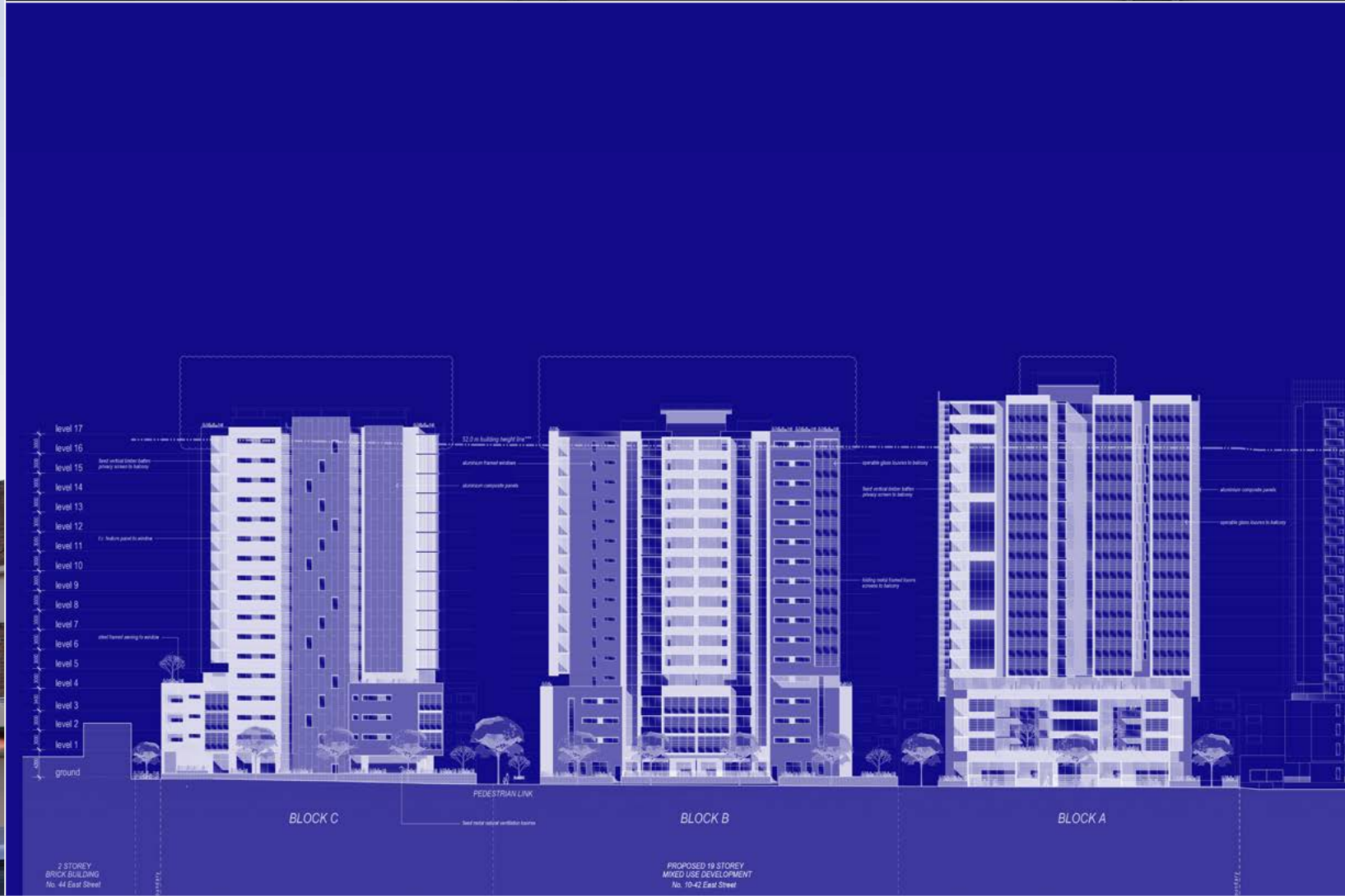
CLIENT + KNORR-BREMSE GROUP

+ 12,500 SQM

+ PURPOSE BUILT OFFICE + WAREHOUSE COMPLEX



+ EAST STREET, GRANVILLE
MIXED USE DEVELOPMENT



CLIENT + KNORR-BREMSE GROUP

+ 3 BUILDINGS
+ 8 STOREYS
+ 463 APARTMENTS

+ CHURCH STREET, NORTH PARRAMATTA
MIXED USE DEVELOPMENT

CLIENT + DYLDAM

+ 12 STOREYS

+ 98 APARTMENTS + RETAIL



+ WAYMAN PLACE, MERRYLANDS
RESIDENTIAL



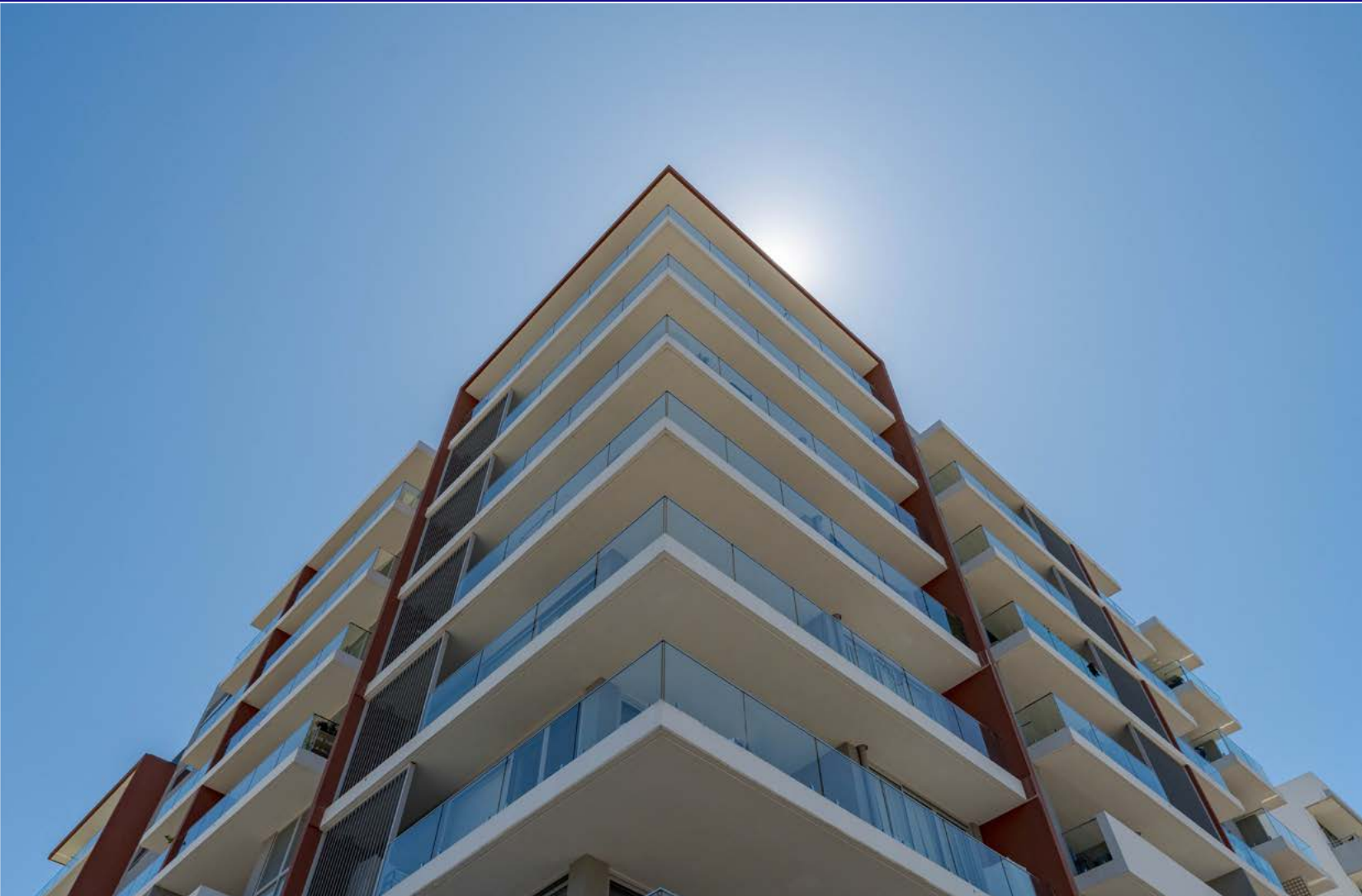
CLIENT + COPLEX

+ 8 STOREYS
+ 62 APARTMENTS

+ SWEET STREET, ROUSE HILL
CHILDCARE CENTRE



+ NEIL STREET, MERRYLANDS
RESIDENTIAL



CLIENT + LANDMARK GROUP

+ 9 STOREYS
+ 120 APARTMENTS

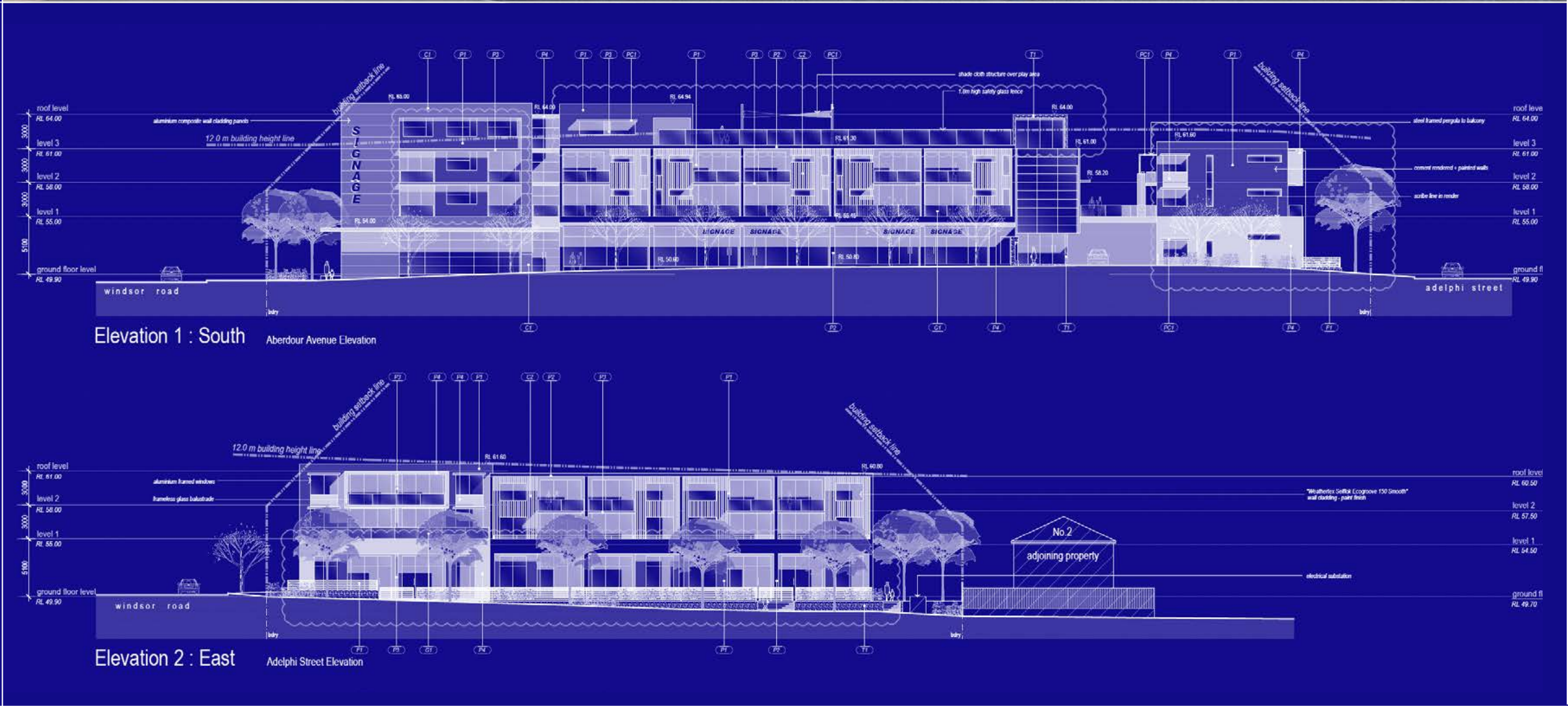
+ WINDSOR ROAD, ROUSE HILL

MIXED USE DEVELOPMENT



CLIENT + MINTUS GROUP

+ 4 STOREYS
+ 48 APARTMENTS
+ RETAIL + CHILDCARE



+ LAROOOL CRESCENT, CASTLE HILL
RESIDENTIAL

CLIENT + CPDM

+ 111 LUXURY APARTMENTS

+ 4 BUILDINGS

+ 6 TOWNHOUSES

+ 21 SKYHOME UNITS



+ 04
THE MIJASU FAMILY

We're a proud member of

MIJASU

People led places, spaces and experiences

WORKING WITH US
GIVES YOU ACCESS
TO THE FULL FAMILY.
A BIGGER TEAM MEANS
WE ALWAYS DREAM
BIGGER; TOGETHER.

Best

PLACEMAKING + WAYFINDING

We are placemakers, wayfinders, experience designers and signage experts enhancing the livability of communities.

Our work is built from contextual and purposeful human insights, rich in environmental sensibility and based upon real-life experiences.

[CLICK TO VISIT WEBSITE](#)



ARCHITEX

ARCHITECTURAL DOCUMENTATION

We are architects, drafters and documenters with over 45 years of experience in large scale multi-residential, retail, industrial and commercial projects.

Using the latest in BIM technology, our work is respected for its precision in coordinating all consultants and disciplines to deliver documentation focused on constructability.

Registered Design Practitioner for Class 2

[CLICK TO VISIT WEBSITE](#)



ARCHITECTURE + INTERIORS

We are architects, makers and dreamers inspired by so much more than just bricks and mortar.

Exploring form, place, materiality, light and sustainability, we work to craft spaces that ignite an emotional connection.

[CLICK TO VISIT WEBSITE](#)



WE BRING RESPECT
TO EVERYONE WE
TALK TO AND WE
COMMIT TO OUR
ESTABLISHED VALUES
IN EVERYTHING WE
DO AND SAY.

PEOPLE-LED DESIGN

People are at the centre of everything we do. We connect with our communities by directly engaging with their needs, wants and reactions. While our services are diverse, their intent is universal: to create highly-connected places, spaces and experiences that contribute to productivity, health and happiness.

CHALLENGE US

We welcome challenges and challengers throughout every part of the process. Whether it's a risk, obstacle or opportunity, we thrive on troubleshooting projects—especially where opportunities exist in sustainability and technology. By aiming beyond the horizon, we're able to make our communities more engaging, inclusive and diverse.

EFFECTIVE COLLABORATION

The old one-size-fits-all approach doesn't apply to our clients. And with our family of businesses, we're able to offer an interdisciplinary response to any project. We lean on each other and are transparent with our work so that no opportunity is left unexplored, and the best outcomes are achieved.

PURPOSEFUL PROGRESSION

We seize every opportunity to celebrate and learn from our unique differences. By actively championing gender, ethnic and cultural diversity across our collective everyday, our work becomes truly progressive. From the local bar to the boardroom, every person has a seat at our table.

ARCHITEX



MELBOURNE +61 3 7003 5279
SYDNEY + 61 2 9633 5888

MELBOURNE 435 SWAN STREET,
RICHMOND VIC 3121

SYDNEY LEVEL 4, 17-19
ALBERTA STREET,
SYDNEY NSW 2000

www.architex.com.au